



LOUIS DREYFUS FOUNDATION ACTIVITY REPORT 2021

FOREWORD



ABOUT THE FOUNDATION



OUR WORK



WHERE WE WORK



WORKING WITH LDC



MICRO-FARMING



EDUCATING THE NEXT GENERATION



ACCESS TO WATER



ENTREPRENEURSHIP



EMERGENCY SUPPORT



GOVERNANCE



FINANCIAL INFORMATION





# HOW TO USE THIS REPORT

This interactive PDF allows you to view and easily find the information you're looking for. By using the buttons on the right-hand menu, and the arrows at the bottom of the page, you can search and navigate the report.



## GUIDE TO BUTTONS

- Link to the Louis Dreyfus Foundation website
- Search the document by keyword
- Return to the main contents page

1 Click the buttons on the navigation panel and within the text, to jump between the subject areas.

1 ●●● When small buttons appear beside the navigation panel, this means further information is available on that subject. Click these to go forward or backward within a section. A small button with solid fill indicates the information you are currently viewing.

- Go to the previous page
- Go to the next page

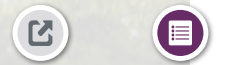
- FOREWORD
- ABOUT THE FOUNDATION
- OUR WORK
- WHERE WE WORK
- WORKING WITH LDC
- MICRO-FARMING
- EDUCATING THE NEXT GENERATION
- ACCESS TO WATER
- ENTREPRENEURSHIP
- EMERGENCY SUPPORT
- GOVERNANCE
- FINANCIAL INFORMATION



NORTH SUMATRA, INDONESIA



# MESSAGE FROM THE PRESIDENT



FOREWORD



EDUCATING THE NEXT GENERATION



ACCESS TO WATER



ENTREPRENEURSHIP



EMERGENCY SUPPORT



GOVERNANCE



FINANCIAL INFORMATION



MARGARITA LOUIS-DREYFUS  
PRESIDENT,  
LOUIS DREYFUS FOUNDATION

For the last two years, the Covid-19 pandemic had dire impacts on already fragile farming communities in the world's poorest regions, compounding climate change consequences and putting at risk food production and supply chains that these communities depend on, with severe consequences in terms of global food security.

Today, the Russia-Ukraine crisis is further disrupting essential food, agricultural and energy supply chains and tightening financial conditions, putting millions of people around the world at risk of hunger and poverty, especially in emerging countries. According to the United Nations<sup>1</sup>, 1.7 billion people are already highly exposed to these consequences, of which 553 million are already living in poverty and 215 million already undernourished. And with smallholder farming communities increasingly affected, these numbers are

likely to grow. This food crisis makes action to safeguard food and nutritional security all the more urgent, ensuring the resilience of the most vulnerable populations to macroeconomic and environmental shocks and stresses, and guaranteeing the sustainability of global food systems – today and for future generations.

*These objectives are at the heart of the Louis Dreyfus Foundation's work to alleviate poverty and bring sustainable solutions to smallholder farmers toward improved food security.*

The Foundation pursued its work to support farmers and their families in vulnerable rural communities, in collaboration with many other public and private actors, civil society and grassroots organizations, and I am extremely grateful for what we achieved in 2021, benefiting thousands of people – farms and

## NORTH SUMATRA, INDONESIA

students, and planting thousands of trees as part of agroforestry projects, despite continued pandemic-related logistics challenges.

I would like to warmly thank all our partner organizations, as well as Louis Dreyfus Company's employees and volunteers who work hand in hand with us year-round, bringing much-needed support to farming communities while protecting the environment.

Our collaboration will continue to be crucial in the years to come, as we face up to new, existing and increasingly urgent social, economic and climatic challenges. In this complex global context, I strongly believe that solidarity, partnerships and the ability to work collectively toward shared goals and fair outcomes remain a fundamental key to the long-term sustainability of our global food system and subsistence of our society.

1. Global impact of war in Ukraine on food, energy and finance systems, United Nations Brief #1, 13 April 2022 (<https://news.un.org/pages/wp-content/uploads/2022/04/UN-GCRG-Brief-1.pdf>)





ROBERT SERPOLLET  
GENERAL MANAGER,  
LOUIS DREYFUS FOUNDATION

## OUR WORK IN 2021

In 2021, the Louis Dreyfus Foundation continued to support projects and programs assisting smallholder farmers in vulnerable rural communities around the world to improve their food production systems sustainably.

Despite continued challenges posed by the ongoing pandemic, our work directly benefited more than 15,000 farmers and 75,000 beneficiaries in farming communities, supported over 500 students and planted 330,000 trees.

We continued to implement existing micro-farming, education, and community and environment projects, and established new partnerships in Côte d'Ivoire, Ghana and South Africa to help smallholder farmers become self-sufficient and unlock educational opportunities.

Most of our 2021 initiatives addressed vulnerable communities lacking sufficient production resources such as land and water, agricultural inputs such as seeds and fertilizers, but also access to markets, information and technology.

Our support helped improve both the productivity and profitability of small farms through more sustainable agricultural practices, while securing production of healthy, nutritious food for



NORTHERN CÔTE D'IVOIRE

consumption by farmers themselves and their communities, contributing to food security and poverty alleviation.

Our approach also contributed to protecting natural resources and the environment, which is crucial to the long-term resilience of agricultural production, to healthier, happier lives in these local communities, and to envisage a brighter future for the next generations.

As mentioned by our President, today's global food crisis has exposed hundreds of millions of vulnerable rural households to its consequences – a context in which our work to build the resilience of farming communities and food systems in the world's poorest regions is vital.

*By resilience, we mean the ability to overcome obstacles and difficulties, and adapt to changes, in a way that ensures lasting success.*

This requires a holistic and collaborative approach, offering support that combines financing,

production tools, knowledge and skills, support networks and an enabling environment. This remains our priority and model, working alongside government stakeholders, implementing partners and volunteers as we move forward with our projects and programs.

I join our President in expressing our heartfelt gratitude to all the Foundation's partners and the many people – at Louis Dreyfus Company and beyond – who contribute to the success of our work: together, we have achieved important progress and impact for those who need it the most, with more to come in 2022 and further!

I am confident that our collective efforts will continue to benefit families and communities the world over, helping smallholder farmers become more resilient, reducing inequalities, and empowering the next generation of leaders in sustainable agriculture.

Navigation icons: Home, Search, Share, Print, and a list of menu items.

- FOREWORD
- ABOUT THE FOUNDATION
- OUR WORK
- WHERE WE WORK
- WORKING WITH EDUCATION
- MICRO-FARMING
- 1
- 2 EDUCATING THE NEXT GENERATION
- 3 ACCESS TO WATER
- 4 ENTREPRENEURSHIP
- 5 EMERGENCY SUPPORT
- GOVERNANCE
- FINANCIAL INFORMATION



# ABOUT THE FOUNDATION



## OUR VISION

*To help fight hunger and poverty by bringing sustainable solutions to smallholder farmers.*



## OUR MISSION

*To improve food security through sustainable micro-farming, education, community empowerment and environmental preservation.*



## WORKING HAND IN HAND WITH LOUIS DREYFUS COMPANY

*The involvement of Louis Dreyfus Company (LDC) employees in the work of the Foundation, as experts and volunteers, allows our projects to benefit from their market knowledge, agronomy expertise and networks. Their contributions are key to the fulfillment of our project goals and help to maximize our positive impact.*

## PRIORITIES AND COMMITMENTS



### CONTEXT

We support rural areas that are vulnerable to food insecurity and climate change, where we see significant potential to develop small-scale agricultural projects.



### LOCATION

We prioritize projects in areas where LDC has an established presence, to leverage networks and expertise, and to encourage employee involvement and volunteering.



### PARTNERSHIPS

LDF works through partners selected with great care, choosing to work alongside those who demonstrate expertise, reliability, a thorough understanding of the local environment and resources, a proven track-record in managing projects related to food security, as well as strong ethics and a vision aligned with our own.



NAKAHA, CÔTE D'IVOIRE



- FOREWORD
- ABOUT THE FOUNDATION
- OUR WORK
- WHERE WE WORK
- WORKING WITH LDC
- MICRO-FARMING 1
- EDUCATING THE NEXT GENERATION 2
- ACCESS TO WATER 3
- ENTREPRENEURSHIP 4
- EMERGENCY SUPPORT 5
- GOVERNANCE
- FINANCIAL INFORMATION



# OUR INVESTMENTS IN 2021

The Louis Dreyfus Foundation continued to allocate resources to promising micro-farming, education, community empowerment and environmental preservation projects in vulnerable regions of Africa, Asia and Latin America. Through our two dedicated funds (the Fund for Young Entrepreneurs and the Fund for Food Emergency Aid), we also support young entrepreneurs in developing countries, and assist populations affected by unforeseen humanitarian crises.

16  
PROJECTS

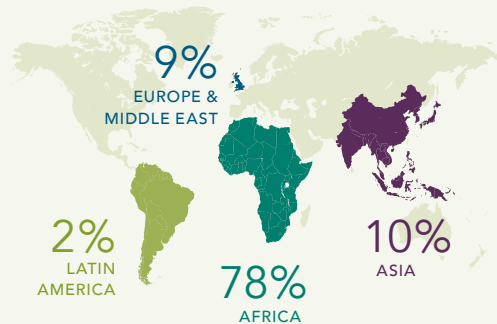
12  
COUNTRIES

15,000  
FARMERS ENGAGED

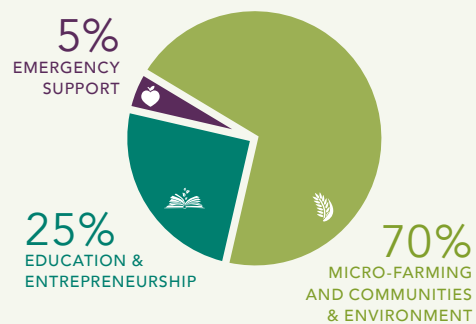
512  
STUDENTS SUPPORTED

75,000  
BENEFICIARIES

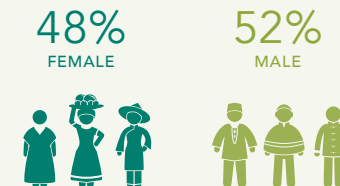
### INVESTMENTS BY CONTINENT



### INVESTMENTS BY PROJECT TYPE



### BENEFICIARIES BY GENDER





# FOUNDATION RESPONSE TO COVID-19

In 2021, smallholder farmers continued to be profoundly impacted by the Covid-19 pandemic, as restrictions and measures implemented to contain the virus limited their ability to sell produce and purchase food, production inputs and other items.

In these times of unprecedented economic and sanitary challenges, the Louis Dreyfus Foundation continued to support its partners and project beneficiaries, by:

- ✓ **ADAPTING PROJECT ACTIVITIES**  
*to meet the most urgent needs and protect the health and safety of all beneficiaries*
- ✓ **EXTENDING PROJECT TIMELINES**  
*and offering maximum flexibility to our partners*
- ✓ **CONVERTING EXISTING GRANTS INTO DIRECT SUPPORT**  
*to buy sanitation kits for farmers and their families*
- ✓ **OFFERING EXTRA FINANCIAL SUPPORT AND TRIGGERING RESPONSE FUNDS**  
*for existing and former partners*
- ✓ **ORGANIZING AWARENESS CAMPAIGNS WITH THE HELP OF LOCAL PARTNERS,**  
*to disseminate reliable information about the virus and suitable preventative measures*



NORTHERN CÔTE D'IVOIRE





# ACHIEVEMENTS RECOGNIZED

## First graduates in Côte d'Ivoire



The agricultural vocational training center (CFAR) in Niofoin, northern Côte d'Ivoire, offers a two-year education program combining general education and theoretical and practical agricultural training. The center celebrated the graduation of its first cohort of 28 students, following their successful completion of the program, including a final graduation project.

## National School Canteens Prize in Côte d'Ivoire



The Foundation-supported cooperative was awarded the National School Canteens Prize for its contribution to feeding schoolchildren. The cooperative is part of our rice value chain enhancement project, providing agricultural assistance to rice producers and cooperatives. Local farmers supported through this project helped to supply rice and other produce to 12 schools that feed more than 2,700 schoolchildren.

## Transform Agricultural Contest in Côte d'Ivoire



The Foundation supported this local contest supporting the agricultural transformation projects of small agri-entrepreneurs. Three grants were awarded to projects in natural sweets, chocolates and cashew production, based on their innovative products, economic benefits for rural communities and promotion of women's inclusion.

## Sustainable Agriculture Award in India



The Foundation's project to build resilience among 3,700 Indian women farmers through training on sustainable agricultural production received the FICCI Outstanding Sustainable Farmer Income Enhancement award. Established in 2021 by the Indian Chambers of Commerce and Industry (FICCI), this award recognizes the efforts of private sector and non-profit organizations in promoting sustainable agriculture development across the country.

## CSR China Education Award



For the second consecutive year, the Foundation's Future Change-Maker project with Louis Dreyfus Company (LDC) received three sustainability awards in the Best Sustainable Development, Ecological Environment, and Youth Impact categories. Both the Foundation and LDC ranked among 100 CSR China top companies and foundations contributing to sustainable development. The Future Change-Maker project aims to support students from ten Chinese agricultural universities, training them on sustainable agriculture practices.



FOREWORD



ABOUT THE FOUNDATION



OUR WORK



WHERE WE WORK



WORKING WITH LDC



MICRO-FARMING



EDUCATING THE NEXT GENERATION



ACCESS TO WATER



ENTREPRENEURSHIP



EMERGENCY SUPPORT



GOVERNANCE



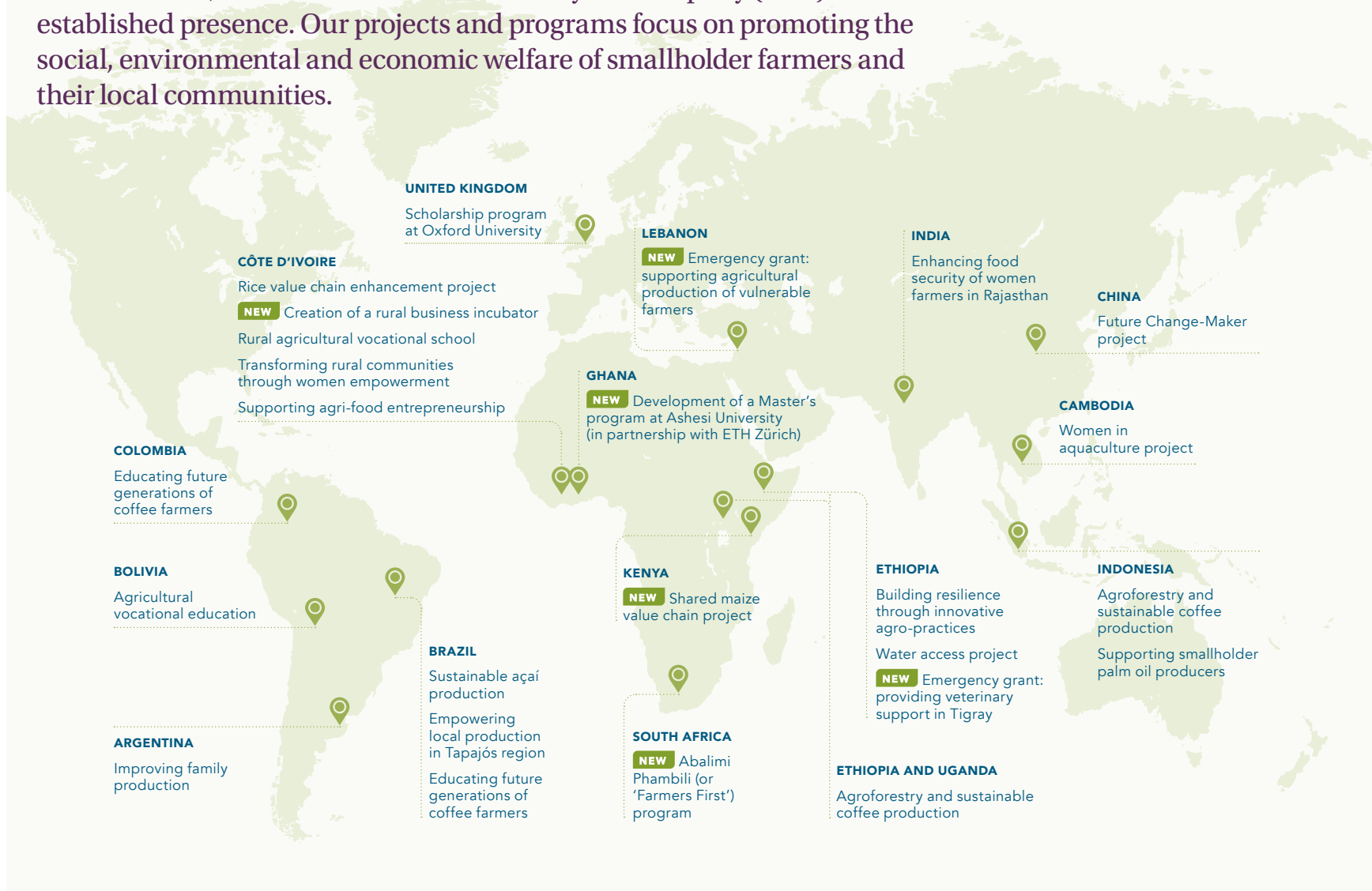
FINANCIAL INFORMATION





# WHERE WE WORK

The Louis Dreyfus Foundation is mostly active across Africa, Asia and Latin America, in countries where Louis Dreyfus Company (LDC) has an established presence. Our projects and programs focus on promoting the social, environmental and economic welfare of smallholder farmers and their local communities.



- FOREWORD 
- ABOUT THE FOUNDATION 
- OUR WORK 
- WHERE WE WORK** 
- WORKING WITH LDC 
- MICRO-FARMING 
- EDUCATING THE NEXT GENERATION 
- ACCESS TO WATER 
- ENTREPRENEURSHIP 
- EMERGENCY SUPPORT 
- GOVERNANCE 
- FINANCIAL INFORMATION 



# WORKING WITH LOUIS DREYFUS COMPANY (LDC)

The Louis Dreyfus Foundation's projects leverage the contextual and market understanding, technical expertise and management skills of LDC experts and volunteers, whose close collaboration with the Foundation is key to the success of our projects.



## EDMOND DUTAUIZET

**HEAD OF WEST AFRICA, LDC**  
Coordinates projects in Côte d'Ivoire.

*"I'm happy to contribute to the Foundation's projects and coordinate them to thrive and achieve the best results possible. Over the course of a project, an important aspect of our role is to analyze data and track progress against key metrics to make informed decisions about the next steps. Working closely with the communities supported by the Foundation, it's very rewarding to witness transformational change within the community that leads to significant improvement in their livelihoods."*



## CHARLOTTE GUIBBAUD-NAVAUD

**COFFEE SUSTAINABILITY COORDINATOR FOR ASIA & AFRICA, LDC**  
Coordinates agroforestry and sustainable coffee production projects in East Africa and Indonesia.

*"The way the Foundation intervenes has changed since when we started. We have innovated along the way and adapted our activities to the specificities of local contexts. There is no 'one-size-fits-all' approach, and it requires time to find a solution that best suits the needs of a given community. To me, the best reward is to visit farmers who have truly succeeded in implementing the practices they were trained in, see their enthusiasm and witness all the improvements in the ways they run their farms."*



## OLIVIER HAMY

**CHIEF OPERATING OFFICER FOR CARBON SOLUTIONS, LDC**  
Coordinates agro-ecological and water access projects in southern Ethiopia.

*"It takes a lot of time to drive the adoption of new practices. That's why the Foundation's long-term support is so important. This allows us to go from a pilot to a scale-up phase, when the project is mature enough to be transferred to the beneficiaries and local authorities. During my field visit in 2017, I was impressed to see the project's short-term benefits, such as reduced soil erosion. Today, in addition to this initial environmental impact, the project has also positively impacted the community both socially and economically, helping them to become self-reliant."*



## LAURA THAVONAT

**GRAINS & OILSEEDS ORIGINATION MANAGER, LDC**  
Coordinates the family farming project in El Chaco, Argentina.

*"In El Chaco, families usually work using the same production methods as their parents and grandparents before them. Here, local development depends a lot on family farming – there are no industries, so agriculture is the main source of income. That's why we focused our efforts on providing technical training to families – we really want to make a change, provide better production tools and ultimately ensure a better quality of life for each family member. I am very much enjoying visiting the producers with my own family, as it helps me understand their needs better and ensure our actions go in the right direction."*



## DIAN MULLER

**GRAINS & OILSEEDS MERCHANT, LDC**  
Coordinates the 'Farmers First' program in South Africa.

*"This farming community needs to learn and develop skills to become better farmers, deliver higher yields and increase profitability. Their willingness and attitude are extraordinary. Working with this group of people and witnessing the results achieved over time is very fulfilling."*

We would also like to thank other LDC employees who supported the Foundation's work in 2021, including Samuel Banyenzaki, Karim Barsoum, Thais Guin Catanzaro, Marielle Chen, Mario Cordoba, Vitor Correa, Pauline Delorme, Alexander Dietz, Mina Djordjic, Marie Eyboulet, Marcela Gamboa, Amaya Gentet, Vipin Gupta, Julie Hibon, Jan Christoph Kabath, Oleksandr Karpenko, Beyene Kerse, Linda Kumbemba, Olivier Laboulle, Rhandi Makhubele, Rana Mansour, Fernanda Marques, Rubens Marques, Michele McElderry, Murilo Parada, Damien Roy, Vivek Saraswat, Fernanda Saturni, Pamela Semmens, Desmond Simarmata, Muhammad Taufiqurahman, Robertus Trihastoaji, Denny Turino, Linzi Vorster, Jane Wairimu, Jenny Angel Zambrano and Luis Zubizarreta.

- FOREWORD
- ABOUT THE FOUNDATION
- OUR WORK
- WHERE WE WORK
- WORKING WITH LDC
- MICRO-FARMING
- EDUCATING THE NEXT GENERATION
- ACCESS TO WATER
- ENTREPRENEURSHIP
- EMERGENCY SUPPORT
- GOVERNANCE
- FINANCIAL INFORMATION



# FOCUS AREA 1: MICRO-FARMING



Micro-farming projects run by the Foundation aim to generate a combination of social, environmental and economic benefits. Our two main areas of intervention include work on sustainable agricultural transformation and value chains, and regenerative agriculture.

- INTRODUCTION
- ABOUT THE FOUNDATION
- OUR WORK
- WHERE WE WORK
- LEARNING WITH US
- MICRO-FARMING**
- EDUCATING THE NEXT GENERATION
- ACCESS TO WATER
- ENTREPRENEURSHIP
- EMERGENCY SUPPORT
- GOVERNANCE
- FINANCIAL INFORMATION

NORTH SUMATRA, INDONESIA



# MICRO-FARMING

## SUSTAINABLE AGRICULTURAL TRANSFORMATION AND VALUE CHAINS

 <p>ARGENTINA</p>	 <p>CÔTE D'IVOIRE</p>	 <p>INDIA</p>	 <p>INDONESIA</p>	 <p>SOUTH AFRICA</p>
<p>IMPROVING FAMILY FARM PRODUCTION</p>	<p>RICE VALUE CHAIN ENHANCEMENT PROJECT</p>	<p>ENHANCING FOOD SECURITY OF WOMEN FARMERS</p>	<p>SUPPORTING SMALLHOLDER PALM OIL PRODUCERS</p>	<p>ABALIMI PHAMBILI (OR 'FARMERS FIRST') PROGRAM</p>
				
				
<p>2019 &gt; 2023</p>	<p>2018 &gt; 2022</p>	<p>2019 &gt; 2024</p>	<p>2019 &gt; 2022</p>	<p>2020 &gt; 2023</p>
<p>56 families received technical assistance and inputs to restore and improve their production systems, including livestock and horticulture. The families also received training on nutrition, cooking and the use of seeds to set up and maintain vegetable gardens.</p>	<p>Thanks to the program, more than 3,600 farmers and 13 cooperatives were provided with technical and capacity-building support tailored to their production profile. Women farmers received training on farm management and compost production and were given additional agricultural equipment to facilitate harvesting.</p>	<p>Thanks to the program, 3,717 farmers received training on pre-sowing, post-sowing, pest management and organic farming. The project also tests innovations related to agroforestry, vegetable production and water harvesting, aiming to diversify farmers' sources of income and improve productivity.</p>	<p>The project provided 2,030 farmers with technical assistance. Three cooperatives, representing more than 300 farmers, received additional training on cooperative management and internal auditing, and successfully completed the audit, leading to RSPO sustainable palm certification.</p>	<p>The project provides 360 farmers (28% of them women) with agricultural technical support, including improved access to inputs, mechanization, agricultural advice and markets.</p>



- FOREWORD
- ABOUT THE FOUNDATION
- OUR WORK
- WHERE WE WORK
- WORKING WITH LDC
- MICRO-FARMING 1**
- EDUCATING THE NEXT GENERATION 2
- ACCESS TO WATER 3
- ENTREPRENEURSHIP 4
- EMERGENCY SUPPORT 5
- GOVERNANCE
- FINANCIAL INFORMATION



## MICRO-FARMING

### SUSTAINABLE AGRICULTURAL TRANSFORMATION AND VALUE CHAINS



## The Abalimi Phambili (or 'Farmers First') program in South Africa

The North West province of South Africa is the country's corn belt, dominated by mid- and large-scale commercial producers.

Small-scale farming communities in this region are represented by black farmers struggling with their agricultural production due to the lack of adequate farmer support services and access to finance, which has a detrimental impact on their subsistence.

*The Abalimi Phambili (or 'Farmers First') program was launched in 2021 and currently supports 360 small-scale maize and sunflower farmers with increasing production for both self-consumption and sale.*

This newly launched support program aims to give smallholder farmers access to the wider agribusiness sector by providing support with inputs, credit, mechanization, information and market access, creating closer working relationships between isolated farmers and the rest of the agricultural value chain. It includes one-on-one farm training, ongoing technical advice and business support. By increasing food production in poor rural communities, the project will also improve food security and contribute to healthier diets.



#### INSIGHTS

##### CREDIT REVOLVING FUND

*A Credit Revolving Fund was set up as part of the project, as a way of scaling up existing production and improving productivity. During the project's first year, 15 farmers received credits to buy agricultural inputs for the 2021–22 planting season. The results of this pilot year will be analyzed and presented to local banks and microfinance institutions to attract larger funds and finance more farmers in the area.*

**360**

SMALL-SCALE FARMERS ARE SUPPORTED IN MAIZE AND SUNFLOWER PRODUCTION

NORTH WEST PROVINCE, SOUTH AFRICA



FOREWORD



ABOUT THE FOUNDATION



OUR WORK



WHERE WE WORK



WORKING WITH LDCs



MICRO-FARMING



EMPOWERING THE NEXT GENERATION



SCALES TO WATER



AGRICULTURAL LEADERSHIP



EMERGENCY RESPONSE



GOVERNANCE



FINANCIAL INFORMATION





The Abalimi Phambili (or 'Farmers First') program in South Africa *continued*



**MR. PHEMELO EDWARD MELKEN**

**SUNFLOWER FARMER**

*"I really appreciate the work Lima and the Foundation have done with my community, and the support I have received through the project. The crops I planted before did not look as good as those on the 20 ha I planted with the project's support. What I planted didn't use to grow properly and I did not know what the problem was or how to fix it, until the calibration was done with the help of Lima: it took them seven hours to identify the correct method and dosage of fertilizer application. Lima's intervention also made me realize the importance of calibration and different practices that could be used depending on land types."*

NORTH WEST PROVINCE, SOUTH AFRICA

**WHAT'S NEXT**

The project will continue to assist smallholder farmers in the country's North West province, to create the conditions for sustainable change within production systems and ultimately improve livelihoods through good and climate-smart agricultural practices.

The project's first year was an opportunity to test the chosen approach and partnerships with different project stakeholders, and to capitalize on experience and learning to develop a sustainable longer-term plan, whether by scaling-up the program or replicating it on new sites.

**MEGHAN ELLIS**

AGRICULTURAL MANAGER,  
LIMA RURAL DEVELOPMENT FOUNDATION

*"The program aims to increase food production in rural areas, at both smallholder and household level. While the main objectives are to offer farmers access to markets and increase their profits, there is also naturally a major positive impact on food security within the local communities, because of the improvement of local food production, both in volume and in quality. Beyond that, the program has a specific focus on integrating women and young people and breaking down the marginalization of women within the agricultural sector."*

**IMPACT**

**360**  
farmers participating in the program

**28%**  
women beneficiaries

**10%**  
expected increase in productivity and income



FOREWORD

ABOUT THE FOUNDATION

OUR WORK

WHERE WE WORK

WORKING WITH LDC

MICRO-FARMING **1**

EDUCATING THE NEXT GENERATION **2**

ACCESS TO WATER **3**

ENTREPRENEURSHIP **4**

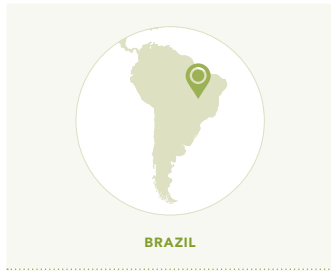
EMERGENCY SUPPORT **5**

GOVERNANCE

FINANCIAL INFORMATION



**MICRO-FARMING**  
**REGENERATIVE AGRICULTURE**



BRAZIL

**SUSTAINABLE  
AÇAÍ MANAGEMENT**



2018 > 2021

59 families were able to improve their açai berry production and set up production associations to sell their fruit directly to açai processing companies in Brazil.



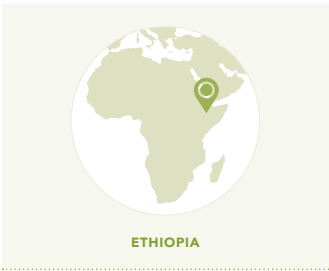
EAST AFRICA & INDONESIA

**AGROFORESTRY AND  
SUSTAINABLE COFFEE  
PRODUCTION**



2015 > 2021

2,695 smallholder coffee farmers in Ethiopia, Uganda and Indonesia received assistance for more sustainable management of coffee farms. More than 330,000 trees were planted in 2021 as part of related agroforestry activities.



ETHIOPIA

**BUILDING RESILIENCE  
THROUGH INNOVATIVE  
AGRO-PRACTICES**



2016 > 2023

In 2021, the project supported 7,216 families in stabilizing their land and building anti-erosive natural structures in the form of terraces planted with fodder grass, a vital source for animal nutrition and income diversification.



BOUNDIALI, CÔTE D'IVOIRE







## Agroforestry and sustainable coffee production in Indonesia

The Louis Dreyfus Foundation has been active in three provinces (Lampung, North Sumatra and Aceh) of Sumatra, Indonesia, since 2015, implementing agroforestry and sustainable coffee management activities in these communities with the support of Louis Dreyfus Company (LDC) and social enterprise PUR Projet.

In these provinces, coffee production is threatened by low productivity and revenues, leading to deforestation as a result of farmland expansion. An attempt to boost income, this in fact aggravates farmers' vulnerability to the adverse effects of climate change in the region, in particular rising temperatures and frequent extreme weather events.

Thanks to the combination of training in good agricultural practices (GAPs) for coffee production and agroforestry, the project aims to improve coffee farm productivity, profitability and sustainability. We focus on improving ecosystems on farmers' parcels to ensure the long-term quality and availability of coffee, while trees planted as part of agroforestry activities provide farmers with an additional source of income and contribute to improved food security.

*Since 2015, this program has reached more than 10,000 farmers, providing them with GAPs training and helping plant 618,000 native trees.*

In 2021 alone, 1,650 farmers received assistance and 120,000 trees were planted. In order to regenerate coffee plantations, improve productivity and help farmers become self-reliant, the project has also helped to establish coffee nurseries in four villages.

### INSIGHTS

#### A MULTI-STRATA AGROFORESTRY SYSTEM

To increase the performance of existing agroforestry models, a multi-strata agroforestry system has been introduced whereby different coffee plants (Arabica and Robusta) are combined with temporary shade trees, timber and cover crops. Temporary shade trees will provide shade during the months of planting, and then their leaves will be used for mulching and to protect cover crops, increasing soil fertility and reducing erosion.

In 2021, a new training module on multi-strata agroforestry was designed and integrated into the project's agroforestry training activities, and related equipment was provided. Two additional species (banana and chili) were distributed and planted as a part of the program in Lampung. These species were chosen based on the interest and expectations of the beneficiaries, as well as easy market access at local level for both crops, thereby contributing to income diversification and family nutrition.



MORE THAN  
**10,000**  
FARMERS HAVE BEEN PROVIDED WITH TRAINING SINCE 2015

NORTH SUMATRA, INDONESIA

- FOREWORD
- ABOUT THE FOUNDATION
- OUR WORK
- WHERE WE WORK
- WORKING WITH US
- MICRO-FARMING** 1
- EDUCATING THE NEXT GENERATION 2
- ACCESS TO WATER 3
- ENTREPRENEURSHIP 4
- EMERGENCY SUPPORT 5
- FINANCIAL INFORMATION





Agroforestry and sustainable coffee production in Indonesia *continued*



**MR. HAMZAH CEKAL BARU**

**COFFEE FARMER**

*"I am happy with the agroforestry program because the avocado seeds I planted will soon bear fruit, and of course this will increase my family's income. It was very helpful to receive quality and high-yielding agroforestry seedlings from the project. The trees grow well and will soon provide permanent shade for my coffee trees. Apart from receiving tree seedlings, I also received technical training and follow-up visits from professional agronomists twice a year, which I am very pleased about. I hope that this program can continue."*

NORTH SUMATRA, INDONESIA

**WHAT'S NEXT**

The project will set up coffee and agroforestry demonstration plots to further boost farmers' motivation and skills in implementing agroforestry systems, and share these best practices with other farmers (who were not project beneficiaries). The agroforestry demonstration plots will thus be used as a learning tool, providing farmers an example of best practices. The project will also address water scarcity thanks to soil water conservation techniques aimed at improving soil water retention capacity, and through the implementation of simple and affordable water collection systems adapted to the local context.

**IMPACT**

**1,985**  
farmers assisted

**120,000**  
trees planted

**23%**  
average coffee  
productivity  
increase



- FOREWORD
- ABOUT THE FOUNDATION
- OUR WORK
- WHERE WE WORK
- WORKING WITH LDC
- MICRO-FARMING** **1**
- EDUCATING THE NEXT GENERATION **2**
- ACCESS TO WATER **3**
- ENTREPRENEURSHIP **4**
- EMERGENCY SUPPORT **5**
- GOVERNANCE
- FINANCIAL INFORMATION

## FOCUS AREA 2: EDUCATING THE NEXT GENERATION



Integrating rural youth is one of the major challenges faced by the Global South on its development path. The Foundation works closely with its partners to develop and provide access to agricultural vocational training for young people in rural areas, with the aim of equipping them with the relevant knowledge and skills to manage agricultural production, renew family farming and foster sustainable development in their community.

- FOREWORD
- ABOUT THE FOUNDATION
- OUR WORK
- WHERE WE WORK
- WORKING WITH CDC
- MICRO-FARMING
- EDUCATING THE NEXT GENERATION**
- ACCESS TO WATER
- FINANCIAL LITERACY
- EMERGENCY SUPPORT
- GOVERNANCE
- FINANCIAL INFORMATION



# EDUCATING THE NEXT GENERATION

## ONGOING PROJECTS

 <p><b>BOLIVIA</b></p>	 <p><b>BRAZIL/COLUMBIA</b></p>	 <p><b>CHINA</b></p>	 <p><b>CÔTE D'IVOIRE</b></p>	 <p><b>CÔTE D'IVOIRE</b></p>
<p><b>AGRICULTURAL VOCATIONAL EDUCATION</b></p>	<p><b>EDUCATING FUTURE GENERATIONS OF COFFEE FARMERS</b></p>	<p><b>FUTURE CHANGE-MAKER PROJECT</b></p>	<p><b>AGRICULTURAL VOCATIONAL EDUCATION</b></p>	<p><b>RURAL BUSINESS INCUBATOR</b></p>
				
				
<p>2016 &gt; 2022</p>	<p>2019 &gt; 2022</p>	<p>2020 &gt; 2022</p>	<p>2018 &gt; 2027</p>	<p>2021 &gt; 2024</p>
<p>The school offers a three-year technical education program consisting of 3,600 hours of theoretical and practical training, with a specific focus on entrepreneurship. 65 students are currently enrolled in the program.</p>	<p>More than 320 students from coffee-producing families received a coffee training program focused on sustainable coffee production, while their parents gained access to technical advice and soil, water and leaf testing.</p>	<p>210 students from seven leading agricultural universities completed a program on sustainable agriculture, and developed projects addressing productivity and inputs application in agricultural villages in China, reaching 230 family farms.</p>	<p>The school provides a two-year theoretical and practical agricultural curriculum for young adults. It also supports students who have already graduated through technical assistance to help them set up and run their farms successfully.</p>	<p>The incubator aims to provide a four-month theoretical and practical curriculum on agricultural production and transformation, financial management, and entrepreneurship. The first 40 trainees will be enrolled in 2022.</p>

-  
- FOREWORD 
- ABOUT THE FOUNDATION 
- OUR WORK 
- WHERE WE WORK 
- WORKING WITH LDC 
- MICRO-FARMING 
- EDUCATING THE NEXT GENERATION**  ●●●●
- ACCESS TO WATER 
- ENTREPRENEURSHIP 
- EMERGENCY SUPPORT 
- GOVERNANCE 
- FINANCIAL INFORMATION 



## Agricultural vocational education in Côte d'Ivoire

A large part of Côte d'Ivoire's population being smallholder farmers relying on agriculture for their subsistence, access to vocational agricultural training can contribute significantly to enhancing agricultural production and improving the livelihoods of farmers and local communities as a whole.

The agricultural training center (CFAR) of Niofoin provides a combination of theoretical and practical training, focusing on sustainable agricultural practices and innovative agro-methods including production, transformation and valorization, equipment maintenance, and biodiversity, water and soil conservation. CFAR also has its own school farm, where practical training takes place, covering the production of various rainfed crops and vegetables, as well as livestock.

*61 students from the northern regions of Côte d'Ivoire are currently studying at CFAR and, in 2021, 28 students successfully presented their final projects and graduated from the school.*

Four of the graduates are currently working in agricultural enterprises and food processing, four are in the transition phase, and the remaining 20 are developing their own projects related to rainfed vegetable and livestock production.

Following graduation, all students are provided with technical assistance and advice to facilitate self-employment in agriculture. The school has also set up a fund to support students' projects with in-kind contributions, such as inputs or construction materials.



**61**  
STUDENTS ARE CURRENTLY STUDYING AT THE AGRICULTURAL TRAINING CENTER OF NIOFOIN

### INSIGHTS

#### EMPOWERING THE LOCAL COMMUNITY THROUGH ITS KEY ROLE IN THE SCHOOL'S MANAGEMENT

*A key element for sustainable rural school development is to ensure integration of local communities into the school's management. CFAR's management committee, which meets every quarter, is composed of local farmers, representatives of professional farmer organizations and other professionals. It facilitates connections with local stakeholders, has a key role in student recruitment and internships, and takes decisions about the school's operations and development priorities. The aim is for local communities to help manage the center and progressively take over its coordination from the implementing partner.*

NIOFOIN, CÔTE D'IVOIRE

- FOREWORD
- ABOUT THE FOUNDATION
- OUR WORK
- WHERE WE WORK
- WORKING WITH LDC
- MICRO-FARMING
- EDUCATING THE NEXT GENERATION
- ACCESS TO WATER
- ENTREPRENEURSHIP
- EMERGENCY SUPPORT
- GOVERNANCE
- FINANCIAL INFORMATION



# EDUCATING THE NEXT GENERATION



## Agricultural vocational education in Côte d'Ivoire continued



**MS. SOGANA KONO**

**CFAR GRADUATE**

*"After my graduation from CFAR, I started to produce maize on a parcel of one hectare, allocated by my dad. I then received an authorization to produce broiler chickens, starting with a first band of 150 chickens that I feed with my own maize and, where necessary, supplement it with other feed I buy from the market. I am very satisfied with my first results: the mortality rate is less than 1%, and in a few months, the number of chickens I have produced will reach 1,000! In future, I plan to diversify my activities by starting vegetable production."*



NIOFOIN, CÔTE D'IVOIRE

**WHAT'S NEXT**

Further development of the school farm is planned, with additional investments in small mechanization and post-harvest management. The project will also focus on technical innovations and the dissemination of agro-ecological practices, such as the production and use of bio-pesticides and bio-fertilizers, crop associations and rotations, agriculture and livestock integration, hedging and anti-erosion facilities. Lastly, professional training for farmers will be developed through a capacity-building program for local producers in Niofoin.

**IMPACT**

**2,800** hours of theoretical and practical training for students

**6%** drop-out rate

**20** new agricultural enterprises have already been set up by students



FOREWORD



ABOUT THE FOUNDATION



OUR WORK



WHERE WE WORK



WORKING WITH LDC



MICRO-FARMING



EDUCATING THE NEXT GENERATION



ACCESS TO WATER



ENTREPRENEURSHIP



EMERGENCY SUPPORT



GOVERNANCE



FINANCIAL INFORMATION





# FOCUS AREA 3: ACCESS TO WATER

In many developing countries, rural communities do not have access to safe water. By facilitating water access and sensitizing communities on water points' maintenance, LDF contributes to improving agricultural production, nutrition and human health.



- FOREWORD
- ABOUT THE FOUNDATION
- OUR WORK
- WHERE WE WORK
- WORKING WITH PARTNERS
- WATER
- AGRICULTURE
- EDUCATION FOR THE NEXT GENERATION
- ACCESS TO WATER
- COMMUNITY ENGAGEMENT
- FINANCIAL INFORMATION

JUJUY, ARGENTINA





## Providing safe access to water in southern Ethiopia

Like many regions in developing countries, communities in southern Ethiopia have limited or no access to safe water. In addition, the time dedicated to productive activities is negatively impacted by water collection points often being located far from people's homes. Facilitating access to safe water is therefore key to improving both the health and livelihoods of local communities.

Run in partnership with Inter Aide since 2019, the project aims to provide permanent access to safe water among rural communities and schools in the mountainous districts of southern Ethiopia.

*In 2021, 12 new water points were built, reaching 7,254 users.*

Every water point includes one fountain, one washtub and one cattle trough, and construction is done with the help of local communities, using the topography to build hydraulic systems as an extension to existing water springs.



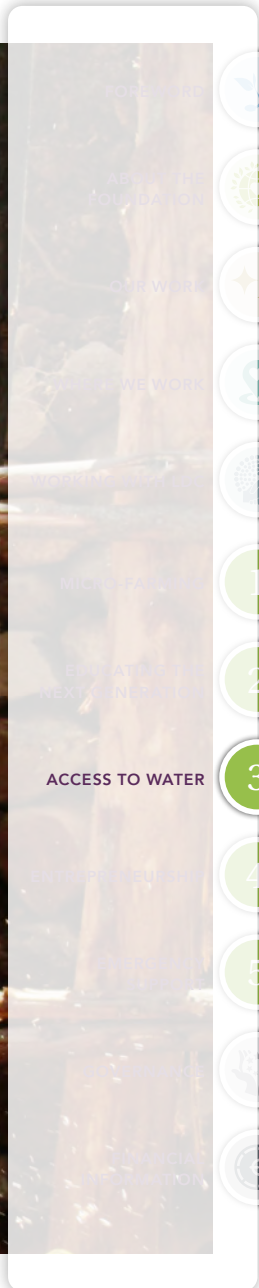
12  
NEW WATER POINTS

### INSIGHTS

#### ORGANIZING WATER MAINTENANCE FOR LOCAL EMPOWERMENT AND AUTONOMOUS OPERATIONS

*Key elements of this project are to ensure that water points stay in a good operating condition, and that local communities are empowered to both manage and take decisions about the water points themselves. To achieve this, each user pays a fee for water use, which is used to fund a maintenance budget covering spare parts and maintenance work. Ultimately, water federations and associations will manage and maintain water points autonomously.*

BOLOSO BOMBE, ETHIOPIA







Providing safe access to water in southern Ethiopia continued



**MS. BERHANESH BEKELE**

**FARMER**

*"I live in Matala Walana, in the district of Boloso Bombe. From my home, the closest water point used to be a 30 to 45-minute walk each way, so I needed to get up very early to fetch water to drink, water my cattle and wash my family's clothes. Getting to the water was dangerous because of the steep and deep riverbank. Because the place was so crowded, which caused quarrels and violence, I often used to come home without any water, and whenever I could get some, it was often contaminated and infested with worms or leeches, which made us sick. The new water point is a two-minute walk from my house and the water is safe and clean. The whole family can drink without fear of diseases, and our health has improved. Our cattle are also getting water every day now."*

BOLOS0 BOMB0, ETHIOPIA

**WHAT'S NEXT**

The program will continue into 2022, extending its reach to new communities from two districts, with 15 water points expected to be built or repaired.

**IMPACT**

**5 to 21 liters**

average daily water consumption increase for a family

**60%**

average decrease in water collection time

**90%**

latrine coverage reached



FOREWORD



ABOUT THE FOUNDATION



OUR WORK



WHERE WE WORK



WORKING WITH LDC



MICRO-FARMING



EDUCATING THE NEXT GENERATION



ACCESS TO WATER



ENTREPRENEURSHIP



EMERGENCY SUPPORT



GOVERNANCE



FINANCIAL INFORMATION





# FOCUS AREA 4: ENTREPRENEURSHIP



By supporting entrepreneurship in the agri-food industry and providing young entrepreneurs with skills and knowledge to successfully run their businesses, the program benefits small food enterprises creating positive impact along the agri-food value chain.

- FOREWORD
- ABOUT THE FOUNDATION
- OUR WORK
- WHERE WE WORK
- WORKING WITH LDC
- AGRI-FOOD FARMING
- 1
- 2
- 3
- 4 ENTREPRENEURSHIP**
- 5 EMERGENCY SUPPORT
- GOVERNANCE
- FINANCIAL INFORMATION

ABIDJAN, CÔTE D'IVOIRE



## Supporting agri-food entrepreneurship in Côte d'Ivoire

As part of the Foundation's partnership with French organization IECD, we are supporting an agri-food entrepreneurship program in Côte d'Ivoire and have initiated a related contest that recognizes the most promising projects of young agri-food entrepreneurs.

Since its inception in 2019, 41 entrepreneurs have enrolled in the two-month incubation program, designed to provide them with the necessary skills and knowledge to succeed in their businesses, from management to marketing and agri-food processing. A business assessment is also performed, with key areas for improvement identified and an action plan devised.

As part of the contest, the winning entrepreneurs are awarded seed money and offered personal coaching to support them in the launch, development and scale-up of their project.

### INSIGHTS

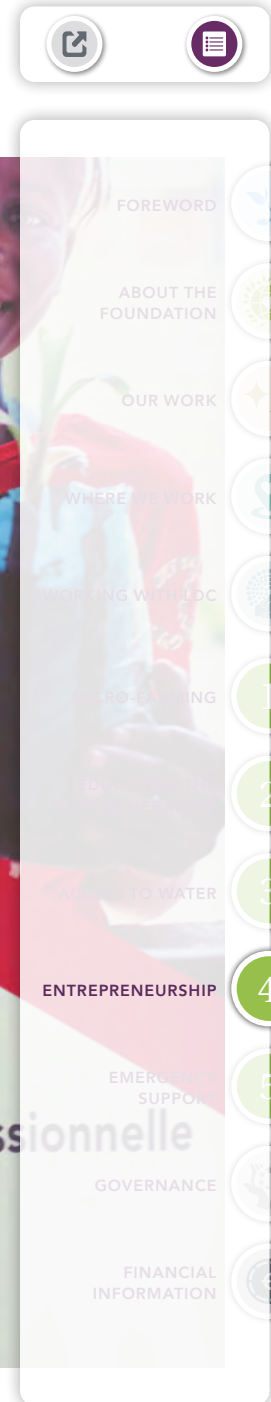
#### CREATING IMPACT ALONG THE VALUE CHAIN

The project is designed to benefit not only entrepreneurs but also stakeholders at various stages of the value chain. This includes smallholder farmers, who supply the entrepreneurs with raw materials. It also results in job creation, for instance with entrepreneurs expanding their salesforce as a result of being able to scale up their business.



**41**  
ENTREPRENEURS  
HAVE ENROLLED  
IN THE  
TWO-MONTH  
INCUBATION  
PROGRAM

ABIDJAN, CÔTE D'IVOIRE







Supporting agri-food entrepreneurship in Côte d'Ivoire *continued*



**MS. CISSE MABRE**

**ENTREPRENEUR**

*"I am 36 years old and live in Bingerville, near Abidjan. I run my own company, Amine Indus, which produces honey sticks. I was awarded first prize in the contest in 2019 and received EUR 13,000 in seed money, which I used to buy production and packaging equipment and increase my storage capacity, which means I am now less exposed to seasonal price fluctuations. For 2.5 years, I also received personalized coaching, which helped me to become more efficient in production, meet the safety and production standards required for agri-food processing, and implement financial management tools. I also recruited a team of commercial and sales assistants to start supplying supermarkets and restaurants. I get my honey from 100 local beekeepers, whom I can in turn help improve the quality of their honey through needs identification and training. I am also supporting them in setting up a cooperative, which will allow them to become more self-reliant."*

ABIDJAN, CÔTE D'IVOIRE

**WHAT'S NEXT**

The program will continue to provide personalized coaching for five entrepreneurs in 2022.

**IMPACT**

**113%**  
increase in turnover on average of seven enterprises

**60**  
jobs created by entrepreneurs

**600**  
farmers are indirect beneficiaries

- FOREWORD
- ABOUT THE FOUNDATION
- OUR WORK
- WHERE WE WORK
- WORKING WITH LDC
- MICRO-FARMING **1**
- EDUCATING THE NEXT GENERATION **2**
- ACCESS TO WATER **3**
- ENTREPRENEURSHIP** **4** ●●●
- EMERGENCY SUPPORT **5**
- GOVERNANCE
- FINANCIAL INFORMATION

# FOCUS AREA 5: EMERGENCY SUPPORT

In addition to its project work, the Foundation seeks to provide emergency support to populations affected by economic or health crises, conflicts or severe adverse climate conditions. In 2021, our dedicated Emergency Fund allowed us to assist smallholder farmers in Lebanon and support the rehabilitation of livestock clinics in Northern Ethiopia, as the countries were hit by an unprecedented economic crisis and a civil war respectively.



- FOREWORD
- ABOUT THE FOUNDATION
- OUR WORK
- WHERE WE WORK
- WORKING WITH LDC
- MICRO-FARMING
- EMERGENCY SUPPORT
- ACCESS TO WATER
- EPHRAIM
- GOVERNANCE
- FINANCIAL INFORMATION





## EMERGENCY SUPPORT

### Emergency support for the Order of Malta's operations in Lebanon

#### CONTEXT

Lebanon is experiencing a profound economic and financial crisis, exacerbated by the blast at Beirut port in August 2020.

In the context of Lebanon's high dependency on food imports, import capacity and local production have both dropped dramatically, leading to a dire shortage of basic food. Compounded by the impact of the Covid-19 pandemic and rising food prices, the situation has impoverished more than half of the Lebanese population as well as Syrian refugees, increasing food insecurity.

#### ABOUT THE ORDER OF MALTA'S OPERATIONS

The Order of Malta provides medical and social assistance in Lebanon.

The organization recently launched an agro-humanitarian project supporting vulnerable farmers to improve food availability through the provision of priority inputs (seedlings and organic matter) and tailored technical assistance across its community health centers.



#### ABOUT THE FOUNDATION'S GRANT

Our contribution secured support for 453 families, representing 2,265 family members and more than 9,000 indirect beneficiaries, including patients, Syrian refugees and vulnerable Lebanese citizens hosted in the Order of Malta's medical and social centers. The Foundation's grant helped provide farmers with seedlings, irrigation tools and support from agricultural engineers over two production seasons. This allowed more than 90% of farmers to generate additional income and cover their consumption needs, while part of their production went to the Order of Malta's centers.



YAROUN, LEBANON

- FOREWORD
- ABOUT THE FOUNDATION
- OUR WORK
- WHERE WE WORK
- WORKING WITH LDC
- MICRO-FARMING 1
- EDUCATING THE NEXT GENERATION 2
- ACCESS TO WATER 3
- ENTREPRENEURSHIP 4
- EMERGENCY SUPPORT 5
- WATER
- FINANCIAL REGULATION



## EMERGENCY SUPPORT

# Emergency support for the UN's FAO vet clinics in Ethiopia

### CONTEXT

The ongoing conflict in Tigray has sparked an unprecedented food crisis. Some 1.1 million households who depend on agriculture for their livelihoods, income and food security were directly impacted.

Mixed crops and livestock are Tigray's main production system, and livestock is therefore key to ensuring the livelihoods of most rural households. As a result of the conflict, 15% of livestock is estimated to have been looted or slaughtered. Moreover, livestock services were disrupted, with feed and veterinary drugs no longer available.

### ABOUT THE FAO'S RESPONSE

In response to this crisis, the Food and Agriculture Organization of the United Nations (FAO) has been able to treat and vaccinate 1.2 million cattle and 2.4 million sheep and goats as well as create mobile veterinary clinics in coordination with local authorities and donors' support.

Each clinic comprises one veterinarian and two veterinary officers who travel to affected areas to both conduct animal health and nutrition assessment visits and provide preventative care and treatment. Through treatment and vaccination, the clinics prevent the loss of more livestock, a key source of milk and other animal products for these communities.



### ABOUT THE FOUNDATION'S GRANT

Our grant is helping support the rehabilitation of six livestock clinics benefiting 36,000 vulnerable households. Clinics are being provided with veterinary drugs and equipment, and animal health coordinators are being offered refresher training on scheduling and undertaking vaccinations. With the livestock vaccination program underway and animal health and productivity improving, the entire region is indirectly benefiting from the FAO's intervention.

TIGRAY, ETHIOPIA



# GOVERNANCE

The Louis Dreyfus Foundation is a company foundation operating under French law, with its registered office based in Paris.

## THE BOARD

The Board takes all decisions in the interest of the Louis Dreyfus Foundation. Board members approve the endowment budget, assess programs and projects, validate the Foundation's strategy and oversee all its efforts and activities.

## BOARD MEMBERS

### MRS. MARGARITA LOUIS-DREYFUS

- President, Louis Dreyfus Foundation
- Chairperson of the Supervisory Board, Louis Dreyfus Holding B.V.
- Non-Executive Chairperson of the Supervisory Board, Louis Dreyfus Company International Holding B.V.

### MR. JEAN-PIERRE BECHTER

- Former Supervisory Board member, Dassault Group
- Former Board member, Le Figaro

### MR. MEHDI EL GLAOU

- Supervisory Board member, Louis Dreyfus Holding B.V. and Louis Dreyfus Company International Holding B.V.

### MRS. FRANZISKA HILDEBRAND ALBERTI

- Partner, P&O Personnel and Organisational Development
- Member, Fundación Cristo Vive Switzerland

### MR. MAURICE KREFT

- Executive Board member, Louis Dreyfus Holding B.V. and Louis Dreyfus Company International Holding B.V.
- Former Board member, European Forest Resources Group

### MRS. YULIA LEVIN

- Supervisory Board member, Louis Dreyfus Holding B.V.
- Former Board member, European Forest Resources Group

## THE ADVISORY COMMITTEE

The Advisory Committee advises the Board on projects that the Foundation could support. Members are individuals selected for their experience and ability to take the Foundation forward.

## ADVISORY COMMITTEE MEMBERS

### DR. ALOK ADHOLEYA

- President, Translational Research and innovations Pvt Ltd
- Former Senior Director of The Energy and Resources Institute (TERI)

### MR. ERIK ANDERSON

- Former CEO North America and former Senior Platform Head Grains & Macro, Louis Dreyfus Company

### DR. CHRISTOPHER GIBBS

- Independent consultant in agriculture and rural development
- Former staff member of the Ford Foundation, the Aga Khan Foundation and the World Bank

### MRS. SARAH HOBSON

- Executive Director, West Marin Fund
- Former Head of Strategic Grantmaking and Movement Building, Global Fund for Women

### PROF. GILLES TRYSTRAM

- Former Director General, AgroParisTech

### MR. ROBERT SERPOLLET

- General Manager, Louis Dreyfus Foundation

### MS. EKATERINA NAYMARK

- Coordinator, Louis Dreyfus Foundation





# 2021 FINANCIAL INFORMATION



## SUMMARIZED STATEMENT OF INCOME AND EXPENDITURE

From 01/01/2021 to 31/12/2021

	€ At 31/12/2021	€ At 31/12/2020
<b>INCOMES (LEGACIES AND GIFTS)</b>	<b>3,873,022</b>	<b>3,722,142</b>
Grants paid for projects and envelopes voted in 2021	1,159,835	986,244
Grants to be paid for projects and envelopes voted in 2021	2,092,153	2,432,406
Other costs and external expenses	336,797	333,365
<b>EXPENSES</b>	<b>3,588,785</b>	<b>3,752,015</b>
<b>OPERATING RESULT</b>	<b>284,238</b>	<b>-29,873</b>
Financial income	2,841	-
Financial expenses	-	7,158
<b>FINANCIAL RESULTS</b>	<b>2,841</b>	<b>-7,158</b>
<b>RECURRING INCOME</b>	<b>287,079</b>	<b>-37,031</b>

1  
 2  
 3  
 4  
 5  
 FINANCIAL INFORMATION

PHOTO BY ABOODI VESAKARAN – INDIA, UNSPLASH



# Louis Dreyfus

Fondation d'entreprise

15, Avenue de la Grande Armée,  
75016 Paris, France

[contact@louisdreyfusfoundation.org](mailto:contact@louisdreyfusfoundation.org)  
[www.louisdreyfusfoundation.org](http://www.louisdreyfusfoundation.org)



## PHOTO CREDITS

- Centre for microFinance
- China Education Support Project
- FairMatch Support
- Fert
- Fundación 'Aquí Es'
- Fundación Cristo Vive
- Institut européen de coopération et de développement (IECD)
- Instituto Peabiru
- Inter Aide
- Lima Rural Development Foundation
- Louis Dreyfus Company
- Order of Malta
- PUR Projet
- SNV
- Springboard
- World Food Programme