

Louis Dreyfus
Fondation d'entreprise

2025

Activity Report

Improving Food Security Through
Sustainable Micro-farming and
Agricultural Education



Contents

03

Foreword



04

About the Foundation



07

Global Reach and Highlights in 2025

09

Working with Louis Dreyfus Company



11

Focus Areas in Action

26

Our Dedicated Funds

30

Governance and Financial Information

32

Partners





Together, we stand with the farmers at the heart of global food systems, empowering them and their communities to build a more food-secure and climate-resilient future.

Our Impact in 2025



Reached **41,240** farmers



Benefited **1,644** students



Impacted **200,000+** beneficiaries



As we look back on this past year, we are encouraged by the impact the Louis Dreyfus Foundation continues to make across the communities we serve.

Our initiatives have reached 41,240 smallholder farmers and impacted more than 200,000 lives, helping families secure food year-round, expanding access to agricultural education, and building stronger, climate-resilient communities.

At the same time, we recognise that many smallholders, especially in the Global South, continue to face worsening conditions. Climate shocks, declining yields, and limited access to essential resources all threaten the resilience of those who grow the world's food. Supporting their ability to adapt and thrive remains central to our mission.

In this context, private philanthropic funding is becoming increasingly important. As public resources - governmental and multilateral - come under pressure and decline, private funds cannot fully compensate but are critical to sustaining progress, supporting innovation, and reaching vulnerable communities. Growing competition for these funds also underscores the need to deploy them effectively and in close alignment with local needs.

We also know that progress is not possible without collaboration. By working closely with non-profit organisations, research institutions, local partners, and Louis Dreyfus Company (LDC) colleagues, we ensure that every project is grounded in local needs and designed for long-term impact.

Margarita Louis-Dreyfus
Honorary President, Louis Dreyfus Foundation



Robert Serpollet
General Manager, Louis Dreyfus Foundation





Foundation Scope

Our Vision

To help fight hunger and poverty by bringing sustainable solutions to smallholder farmers.

Our Mission

To improve food security through sustainable micro-farming and agricultural education.

Context

We support rural areas that are vulnerable to food insecurity and climate change, where we see significant potential to develop small-scale agricultural projects and promote vocational education.

Locations



The Louis Dreyfus Foundation (hereafter the Foundation) is mostly active across Africa, Asia, and Latin America, in countries where LDC has an established presence.



Projects

Our projects and programmes focus on promoting the social, environmental, and economic welfare of smallholder farmers and their local communities.

Strong Partnerships

The Foundation works with partners that demonstrate expertise, reliability, a thorough understanding of local contexts and resources, a proven track record in managing projects related to food security, as well as strong ethics and a vision aligned with our own.

The involvement of LDC employees in the Foundation's work allows our projects to benefit from their market knowledge, agronomy expertise, and networks. Their contributions are key to the fulfilment of our project goals and help maximise our positive impact. This engagement also benefits employees by strengthening their understanding of smallholder farmers, enabling learning from the field, and fostering fulfilment through community volunteering.





Our Focus Areas

We supported initiatives that strengthen communities, promote sustainable practices, and build skills for the future - contributing to progress towards our mission.



Advancing the United Nations Sustainable Development Goals



We help farming communities to address productivity and efficiency gaps.



We strive to improve household food availability and consumption of nutritious food.



We facilitate access to agricultural education, to make agriculture attractive and reduce rural migration.



We empower women in rural communities.



We promote community climate action, helping to preserve biodiversity and soil health.

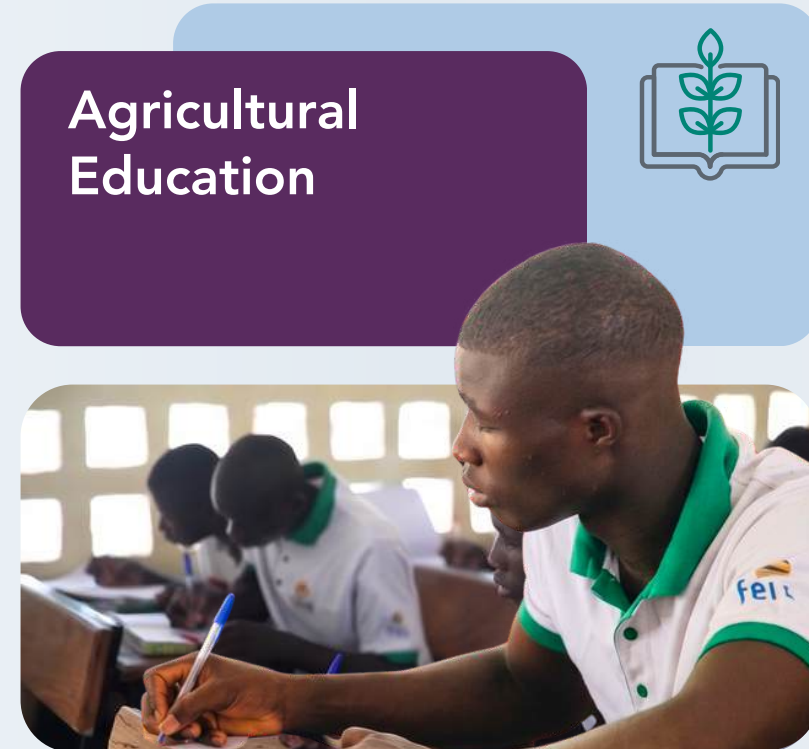


Micro-farming



Through targeted micro-farming initiatives, the Foundation supports smallholder farmers in adopting sustainable agricultural practices that enhance productivity, strengthen household food security, and improve long-term economic resilience.

- Enhanced productivity
- Stronger food security
- Improved economic resilience



Agricultural Education



The Foundation advances agricultural education by supporting vocational training institutions, capacity-building programmes, and scholarship opportunities that equip young people with the technical skills and leadership capabilities required to contribute meaningfully to the future of agriculture.

- Skilled and empowered youth
- Stronger training institutions
- Future-ready agriculture leaders



Communities and Environment



The Foundation works with rural communities to promote environmentally responsible resource management, improve access to essential services such as water, and strengthen local resilience to climate-related risks through community-driven initiatives.

- Responsible resource management
- Access to clean water
- Strengthened climate resilience





Our Dedicated Funds

The Foundation's tailored funding streams enable targeted support for specific initiatives in line with our mission. They provide a flexible way to channel resources towards supporting young entrepreneurs and contributing to emergency response efforts.

Fund for Young Entrepreneurs in Agriculture



This fund supports young agripreneurs in developing countries by financing innovative, small-scale agricultural ventures that demonstrate strong potential to improve food security, generate income, and stimulate sustainable rural development.



Fund for Food Emergency Aid



This fund provides relief to communities affected by humanitarian crises, enabling timely delivery of food assistance, agricultural recovery inputs, and essential supplies, in partnership with trusted international organisations.





Our Projects Around the World in 2025

13 countries

27 ongoing projects

5 scholarship programmes



Côte d'Ivoire

- Supporting smallholders producing maize and leguminous crops **NEW**
- Improving rice sector performance
- Promoting regenerative agriculture through a rural business incubator
- Training the next generation of farmers in an agricultural vocational school



Egypt

- Empowering women through agricultural production



Brazil

- Enhancing production and livelihoods of small-scale producers **NEW**
- Advancing sustainable practices in the Cerrado savanna
- Supporting small-scale soybean producers
- Supporting agricultural students at University of São Paulo



Argentina

- Supporting sugarcane smallholder farmers in Tucuman **NEW**
- Enhancing production and livelihoods of smallholder farming families
- Supporting agricultural students at University of Salta and Santiago Del Estero



Ghana

- Development of a Master's programme at Ashesi University



South Africa

- Strengthening food security and livelihood opportunities for smallholder farmers **NEW**
- Supporting agricultural students at University of Pretoria



Ethiopia

- Providing access to safe water and supporting agricultural production for coffee smallholder farmers



Kenya

- Enhancing farmer livelihoods through Integrated Soil Fertility Management **NEW**
- Supporting women agricultural entrepreneurs and their ecosystems **NEW**
- Creating a shared value chain for maize production
- Improving farmer livelihoods through agroecological practices (Laikipia, Meru, and Uasin Gishu counties)
- Enhancing productivity and soil health through agroecological practices (Kitui and Nakuru counties)
- Supporting agricultural students at Egerton University



India

- Promoting water-efficient and climate-resilient rice cultivation in India **NEW**
- Enhancing food security of women smallholder farmers
- Enhancing livelihood resilience of communities affected by salinity ingress
- Supporting agricultural students at Agricultural Sciences University, Bengaluru



China

- Supporting smallholder farmers with adopting regenerative practices



Myanmar

- Supporting communities affected by the March 2025 earthquake **Emergency Contribution**



Cambodia

- Supporting the Smiling Gecko School and Education Campus



Indonesia

- Promoting and supporting micro-businesses in rural Lampung **NEW**
- Improving the curriculum at Polbangtan Technical University
- Supporting smallholder palm oil producers





New Projects and Extensions Approved in 2025

In 2025, the Louis Dreyfus Foundation strengthened its global portfolio with a new round of validated initiatives and project extensions designed to deepen impact, consolidate results, and expand opportunities for smallholder farmers worldwide.



In total, the Foundation Board approved

7 new projects

3 extensions

New

The Foundation launched several strategic projects across Africa, Asia, and South America.



Partnership with **Potenciar**: Supporting sugarcane smallholder farmers in Tucuman, **Argentina**



Partnership with **AgriSud**: Enhancing production and livelihoods of small-scale producers in **Brazil**



Partnership with **Institut Européen de Coopération et de Développement**: Supporting smallholder maize and legume growers in **Côte d'Ivoire**



Partnership with **CARD**: Promoting water-efficient and climate-resilient rice cultivation in **India**



Partnership with **Equity Group Foundation**: Supporting women agricultural entrepreneurs and their ecosystems in **Kenya**



Partnership with **ETH Zurich**: Enhancing farmers' livelihoods through the Integrated Soil Fertility Management in **Kenya**



Partnership with **Siyazisiza Trust**: Strengthening food security and livelihood opportunities for smallholder farmers in **South Africa**

Extensions

To reinforce successful interventions and scale up proven models, three ongoing projects were extended:



Partnership with **InterAide**: Providing access to safe water and supporting agricultural production for coffee farmers in **Ethiopia**



Partnership with **Centre for microFinance**: Enhancing food security of women smallholder farmers in **India**



Partnership with **Fert**: Improving farmer livelihoods through agroecological practices in **Kenya**





Working with LDC

Today, the Foundation works with an established network of senior LDC employees across key geographies. These “agents” play various roles in Foundation projects - from ambassadors to advisors or field supervisors. More than 40 LDC colleagues worldwide support Foundation project monitoring, engage with implementing partners, and ensure our initiatives remain grounded in real-world needs.

40+ LDC
employees involved

7
field visits completed in 2025

LDC agents join project steering committee meetings, review project progress, and represent the Foundation in conversations with local authorities and community groups. They also help understand local realities, cultural nuances, and emerging challenges.

This approach has proven especially valuable in remote or hard-to-reach geographies where the Foundation’s partners appreciate having a trusted local representative.

Today, from the rice paddies of Côte d’Ivoire to the coffee hills of Ethiopia and the smallholder farms of Argentina, the presence and contributions of LDC employees form an essential thread: one that connects the Foundation’s mission with the daily lives of the farmers it serves.



The idea took shape in 2017, when the Foundation formalised its strategy to work closely with LDC’s regional teams. The Foundation consists of a small core team without permanent country offices, whereas LDC has activities in more than 100 countries – from agronomists walking coffee fields in Uganda to commercial managers supervising rice operations in Côte d’Ivoire. Their insight, presence, and commitment have become integral to the Foundation’s mission.

Across Africa, Asia, and Latin America, LDC colleagues have stepped forward to support shared goals: some by volunteering for field visits, others by offering technical expertise in agronomy, sustainability, logistics, or market access.



When the Louis Dreyfus Foundation launched its first projects more than a decade ago, it quickly became clear that meaningful and lasting impact in rural communities cannot be achieved from a distance. It requires people on the ground: people who understand local realities and agricultural challenges, and can translate global expertise into practical, everyday solutions.

Margarita Louis-Dreyfus
Honorary President
Louis Dreyfus Foundation





Micro-farming

Through targeted micro-farming initiatives, the Foundation supports smallholder farmers in adopting sustainable agricultural practices that enhance productivity, strengthen household food security, and improve long-term economic resilience.





Strengthening Micro-farming Systems

Enhancing productivity, resilience, and household food security on small landholdings.



Context

Micro-farming initiatives support smallholder farmers in improving food availability and generating income from limited land resources. The approach focuses on practical, low-cost techniques adapted to local conditions.

Objectives



Promote climate-smart and regenerative agricultural practices



Improve household food security and income stability through micro-farming



Support the leadership of women and youth in agricultural activities

Key Results



41,240

smallholder farmers reached



75%

adoption rate of improved agricultural practices on average



34%

yield increase per unit area on average



57%

improvement in farmer incomes on average

Observed Contributions



More efficient use of limited land resources



Greater participation of women and youth in local farming systems



Higher and more stable production levels



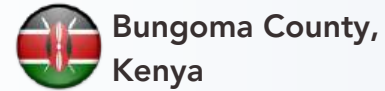
Increased resilience to climate and market variability





Building Climate-Resilient Livelihoods for Smallholder Farmers

Location



Partner

Solidaridad

Duration

2022-2026

Maize is a staple crop and a cornerstone of food security in Bungoma County, Kenya, where thousands of smallholder farmers rely on rain-fed agriculture for both sustenance and income. Despite its potential, maize productivity in the region has remained low for years due to a combination of declining soil fertility, erratic climate patterns, limited access to mechanisation, and lack of extension services. Local farmers - many of whom cultivate less than one acre - struggled to achieve reliable harvests, leaving households vulnerable to food shortages and income instability.

To help address these barriers, the Foundation is supporting the establishment of a farmer-centric, climate-smart maize value chain designed to strengthen inclusion, enhance knowledge transfer, and improve market access. Through practical training, demonstration plots, soil testing, financial inclusion mechanisms, and farmer-led aggregation centres, the project equips smallholder farmers with the skills, tools, and opportunities needed to build long-term resilience and secure sustainable sources of income.

By fostering stronger linkages between farmers, input providers, and buyers, the initiative also aims to create a more efficient and inclusive ecosystem that enhances productivity, while ensuring fair and stable market participation.



Project Impact



5,998

farmers reached



134

Community Trainers engaged



70%

increase in maize production on average



9,600

hectares under minimum tillage





Success Story

From Four to Fifteen Bags: Jackline Sakwa's Soil-Smart Farming Journey



Jackline Sakwa, a 63-year-old farmer from Bumula Ward, Bungoma County, has grown maize most of her life, yet her half-acre farm rarely produced more than four bags. Until joining the project, she had never tested her soil, used certified seed or been exposed to climate-smart agriculture.

As a demonstration plot host, Jackline received hands-on training and regular mentorship. Through the project, she learned to use certified seeds, apply minimum tillage with a ripper, mulch effectively, manage weeds, diversify with cassava and beans, and improve soil health through crop rotation and targeted fertilization based on soil test results.

As a result, **her yield increased from four to fifteen bags** on the same plot, nearly quadrupling production. Motivated by this success, she plans to apply these practices across her full three acres.

Jackline has become a respected role model in her community, guiding fellow farmers, encouraging youth participation - including her son - and actively promoting soil conservation and climate-resilient farming.





Supporting Production and Livelihoods of Smallholder Farming Families

Location



El Chaco, Argentina

Partner



Fundación Aquí Es

Duration

2019-2026

In the southwest of Chaco, Argentina, smallholder farming families face a harsh production environment marked by prolonged drought, extreme climate variability, and limited economic opportunities. After four consecutive years of drought, many households lacked even drinking water and family farming received little national support.

Despite these challenges, our project with Fundación Aquí Es worked with more than 900 families across a vast territory to strengthen production, market access, and community-based economic development.

The project successfully established Pozo del Indio Cooperative as the commercial engine enabling small-scale producers to access formal markets.



Project Impact



900+
families supported



315
trainings delivered



63%
of families reported improved production levels



59%
of families established health plans for animals





Success Story

Carlos Piatti's Story: From Subsistence to Growth

Carlos Piatti, a 60-year-old farmer from Corzuela, Chaco, ran a small poultry operation with his wife and son, selling limited quantities locally while struggling with animal health issues and limited veterinary access.

The project's key interventions provided:

- Reliable sales channels via the Pozo del Indio Cooperative
- Lower input costs through bulk purchasing
- Veterinary guidance that improved flock health and farm standards
- Ongoing technical assistance

The family adopted basic management tools - weekly broiler weighing, daily egg logs, and simple spreadsheets, allowing them to control costs and plan for growth.

Carlos increased broiler output by 30%, improved feed management, and gained the confidence to expand towards a more formal business model.

He also observed a wider shift in his community, with producers beginning to see themselves not just as subsistence farmers, but as emerging rural entrepreneurs.

Carlos increased broiler output by 30%, improved feed management, and gained the confidence to expand towards a more formal business model.





Agricultural Education

The Foundation advances agricultural education by supporting vocational training institutions, capacity-building programmes, and scholarship opportunities that equip young people with the technical skills and leadership capabilities required to contribute meaningfully to the future of agriculture.





Strengthening Skills and Capabilities for the Future of Agriculture

Supporting education pathways that enable young people to pursue sustainable livelihoods and build productive careers in agriculture.



Context

Agricultural education initiatives aim to strengthen human capital in rural areas by combining technical training, practical experience, and access to higher education. These efforts contribute to innovation, productivity, and long-term development in rural areas.

Objectives



Build rural youth capabilities through vocational training and incubation



Improve agricultural curricula, including the integration of STEM¹ approaches



Support higher education in agriculture through targeted scholarships

Key Results



1,646
students and pupils supported in total



>70
university scholarships awarded in Argentina, Brazil, India, Kenya, and South Africa



Observed Contributions



Improved access to quality agricultural education



Development of practical, job-relevant skills



Support for emerging agripreneurs



Strengthened links between education, employment, and rural communities



¹ STEM is an integrated approach to learning that combines Science, Technology, Engineering, and Mathematics to strengthen problem-solving skills and apply knowledge to real-world situations





Training The Next Generation of Farmers

Location



Côte d'Ivoire

Partner



Duration

2019-2027

Agriculture remains the backbone of Côte d'Ivoire's economy, yet rural youth often lack skills and resources, and are excluded from the opportunities this sector can offer. Without targeted training, they face unemployment and poverty despite living in regions with rich agricultural potential.

Through the **CFAR** (Centre de Formation Agricole et Rurale) and **CIRA** (Centre d'Incubation Rurale et Agricole) agricultural training centres in Côte d'Ivoire, the Foundation helps rural youth build sustainable future in their own communities.

Based in Niofoin (Poro region), CFAR offers a two-year hands-on agricultural programme that equips students with technical and entrepreneurial skills to start viable farms.

CIRA, in Aboisso (Sud Comoé), provides a six-month course focused on experimentation and sustainable practices tailored to the palm-oil region, including agroforestry and natural fertilizers. Graduates benefit from follow-up support, including coaching, access to local networks, and small equipment, enabling them to establish their farms.



Project Impact



76
graduates



183
graduates received
post-graduation
support in Côte
d'Ivoire



30%
female students



400+
community
members supported
through training
centres





Success Story

Training to Transformation: Young Agripreneurs Building Sustainable Futures in Côte d'Ivoire

Former students become community leaders, sharing best practices and strengthening local knowledge networks, food security, and cohesion. By empowering young people, CFAR and CIRA help reduce rural exodus, stimulate local economies, and build more resilient communities.

Awa Sanogo
Boundiali, Bagoué region,
Côte d'Ivoire

Awa's journey began after leaving school in the 9th grade. With CFAR's support and post-graduate assistance, she grew her poultry business to three large buildings housing thousands of birds. She now works alongside her husband, combining poultry farming with vegetable production, and employs four people.



CFAR gave me the confidence to realise my dreams. Now, I have the tools to make any project happen
– Awa Sanogo



Jacques Salomon Assahoue
Baffia, Sud Comoé region,
Côte d'Ivoire

Jacques manages a diversified farm combining palm oil (4 ha), cocoa (2.5 ha), pepper (1 ha), and livestock (700 poultry and 15 sheep). Through CIRA training, he adopted regenerative practices such as biopesticide production and composting with poultry manure and empty fruit bunches. He also hosted CIRA trainees during their internships, helping strengthen community learning. His long-term vision is to become a large-scale organic farmer and establish his farm as an agroecological learning centre.



Fertilization should not be focused solely on production, but also on soil life: the earth never betrays us
– Jacques Salomon Assahoue





Scholarship Programme

Location



Through its scholarship programme, the Foundation supports talented agricultural students, helping them become future leaders and contribute to sustainable development in their home countries. Scholarships cover tuition or living expenses, while LDC offers added value through internships, career guidance, and visits to LDC offices and facilities.

The programme supports diploma, undergraduate, and postgraduate studies in selected universities across Argentina, Brazil, India, Kenya, and South Africa. Recipients are underprivileged students - half of them women - who show strong academic performance and a commitment to sustainable agriculture.

In 2025, the Foundation supported 72 students across five countries. Beyond financial assistance, students in Argentina received mentoring and skills-development support from Fundación Grano de Mostaza, while in Brazil, scholarship recipients engaged with employees and alumni during an immersion visit to an LDC-managed orange farm.

Partner Universities



Egerton University, Kenya



University of Pretoria, South Africa



University of Agricultural Sciences, Bengaluru, India



University of São Paulo, Brazil



UNSa Universidad Nacional de Salta, Argentina



UNSE



Your support played a meaningful role in making this achievement possible, and I am truly grateful for the investment in my academic and professional development. My degree has opened so many doors for me, and I am currently employed at Grain SA as a Junior Economist.

Cathrine Mathekga
Foundation scholar and University of Pretoria graduate





Community and Environment

The Foundation works with rural communities to promote environmentally responsible resource management, improve access to essential services and resources such as water, and strengthen local resilience to climate-related risks through community-driven initiatives.





Supporting Community Resilience and Sustainable Resource Management

Improving access to essential services, including water and sanitation, while strengthening environmental sustainability.



Context

Community and environment initiatives focus on water access, sanitation, and sustainable land use. These interventions are designed to improve living conditions, reduce vulnerability to climate risks, and support long-term community resilience.



Objectives



Improve access to water and sanitation



Support locally-driven community initiatives



Strengthen climate resilience through sustainable land and water management

Key Results



25

new water points constructed and maintenance support provided to 561 existing water points, serving approximately 144,000 users in Ethiopia



99%

latrine coverage achieved in targeted areas in Ethiopia



73

water infrastructure assets constructed (wells, check dams, and water-harvesting ponds), benefitting 340 households in India

Observed Contributions



Enhanced reliable access to safe water and sanitation



Improved land and water resources management



Increased community engagement in sustainability initiatives



Established foundations for long-term environmental and social resilience





Building Resilient Livelihoods in Salinity-Affected Communities

Location



Partner



Duration

2023-2026

In the coastal districts of Gujarat, communities continue to grapple with salinity ingress, declining groundwater levels, and increasingly unpredictable weather patterns. Through targeted investments in water management, sustainable agriculture, and household nutrition, the Foundation is helping farmers build resilience and secure long-term well-being.

Across 60 coastal villages, the project supports more than 6,000 smallholder farming households whose livelihoods are increasingly constrained by saline soils and limited access to fresh water. Salinity intrusion into aquifers and declining groundwater quality has reduced agricultural productivity and threatened drinking water availability, fueling poverty and seasonal outmigration.

To address these challenges, the project focuses on strengthening community water security through integrated water resource management. Investments in check dams, well recharge systems, and water harvesting structures are improving groundwater availability while water budgeting and efficient irrigation practices help farmers make better use of scarce resources. Combined with capacity building and support for household nutrition, these interventions are enabling communities to stabilise production, improve access to water, and build more resilient livelihoods.



Project Impact



73

water infrastructure assets constructed



4,300+

farmers trained on crop management



71%

of farmers adopted at least one water-saving practice



35 - 40%

yield increase in areas benefitting from improved irrigation and recharge





Success Story

Restoring Water Security in Kotdi Village

In Kotdi village, Rajula Block, Amreli District, **Sureshbhai Dhakadha** had long struggled with water scarcity, as the only check dam had deteriorated over the years. With the Foundation’s support, a new check dam was constructed, significantly improving groundwater recharge and ensuring water availability for two to three additional irrigation cycles during critical stages of the cropping season. Today, the community is better equipped to manage water resources collectively, with local user groups committed to maintaining the structure for future generations.

For **Vallabhbhai Baldaniya**, the introduction of well-recharge pits marked a turning point. Previously unaware of rainwater harvesting practices, he gained practical training and financial support to construct a recharge structure for his well. The results have been remarkable: the drinking water quality improved, groundwater levels increased, and crop yields grew by 35 – 40%.



This initiative has sparked wider community participation in sustainable water management.





Fund for Young Entrepreneurs in Agriculture

This fund supports young agripreneurs in developing countries by financing innovative, small-scale agricultural ventures that demonstrate strong potential to improve food security, generate income, and stimulate sustainable rural development.





Igniting the Rural Economy Through Micro-Enterprises

Location



Partner



Duration

2025-2026

This initiative supports inclusive rural economic growth in Sekincau, West Lampung, by developing Pancer Tani: youth- and women-led micro-enterprises that provide agricultural services such as seedling nurseries, organic fertilizer production, and fresh produce aggregation.

In 2025, the project established 15 new Pancer Tani, nine of them managed by women. Young agripreneurs received targeted training in business management, marketing, financial literacy, and technical production, alongside regular mentoring and operational support.

In addition, the project reached an additional 300 women farmers through community-level trainings on family nutrition and financial literacy.

Pancer Tani businesses began showing measurable improvements, including increased production capacity, diversified product offerings, improved workspaces and legal registration, and growing customer uptake, with 195 farmers accessing services during the reporting period.

Through practical skills development and entrepreneurship support, the project strengthens rural livelihoods, expands market access, and elevates women and youth leadership in the local agricultural economy.





Fund for Food Emergency Aid

This fund provides relief to communities affected by humanitarian crises, enabling timely delivery of food assistance, agricultural recovery inputs, and essential supplies, in partnership with trusted international organisations.



Emergency Agricultural Support for Earthquake-Affected Communities in Myanmar

Location



Partner



Duration

2025-2026

Following the 7.7-magnitude earthquake that struck central Myanmar in March 2025, severely damaging croplands, infrastructure, and rural livelihoods, the Fund provided urgent assistance to the most affected farming households in Kyaukse and Pyawbwe townships.

The project supported 1,200 vulnerable households with emergency agricultural input packages (green gram seed and compound fertilizer) to restore food production ahead of the monsoon season, alongside a one-time unconditional cash transfer to meet immediate basic needs.

In coordination with local partners, the UN Food and Agriculture Organisation (FAO) combined input distribution with awareness sessions on Good Agricultural Practices (GAPs) to ensure effective and sustainable use of resources. The project prioritised highly vulnerable groups, including women-led households and those experiencing severe crop and asset losses.

By rapidly restoring access to essential inputs and short-term financial relief, the project helped earthquake-affected farmers rebuild their livelihoods, secure the next planting season, and reduce the risk of deepening food insecurity.





Governance

The Louis Dreyfus Foundation is a company foundation operating under French law, with its registered office based in Paris.

The Board

The Board takes all decisions in the interest of the Louis Dreyfus Foundation. Board members approve the budget, assess programmes and projects, validate the Foundation's strategy and oversee all its efforts and activities.

Board Members

Mrs. Margarita Louis-Dreyfus
Honorary President, Louis Dreyfus Foundation
Chairperson of the Supervisory Board,
Louis Dreyfus Holding B.V.
Non-Executive Chairperson of the Supervisory Board,
Louis Dreyfus Company International Holding B.V.

Mrs. Alfiya Askar Abulkhair
Founder and Chairperson, BATT Invest Company
Honorary member of the Board of the Royal
Opera House, Covent Garden

Mr. Mehdi El Glaoui
Supervisory Board member, Louis Dreyfus Holding
B.V. and Louis Dreyfus Company International
Holding B.V.

Mrs. Franziska Hildebrand Alberti
Partner, P&O Personnel and Organisational
Development
Advisor, Fundación Cristo Vive Switzerland

Mr. Maurice Kreft
Executive Board member, Louis Dreyfus Holding
B.V. and Louis Dreyfus Company International
Holding B.V.
Former Board member, European Forest
Resources Group

Mrs. Yulia Levin
President, Louis Dreyfus Foundation
Supervisory Board member, Louis Dreyfus Holding B.V.
Former Board member, European Forest Resources Group

The Advisory Committee

The Advisory Committee advises the Board on projects that the Foundation could support. Members are individuals selected for their experience and ability to take the Foundation forward.

Advisory Committee Members

Dr. Alok Adholeya
Entrepreneur
Former Senior Director, Sustainable Agriculture Division,
The Energy and Resources Institute (TERI)

Mr. Erik Anderson
Former CEO North America and
former Senior Platform Head Grains & Macro,
Louis Dreyfus Company

Dr. Christopher Gibbs
Independent consultant in agriculture and rural
development
Former staff member, Ford Foundation,
The Aga Khan Foundation and the World Bank

Mrs. Sarah Hobson
Consultant in local food systems and women farmers
Former Executive Director, West Marin Fund, and
Head of Strategic Grantmaking, Global Fund for Women

Management Team

Mr. Robert Serpollet
General Manager, Louis Dreyfus Foundation

Ms. Ekaterina Naymark
Operations Lead, Louis Dreyfus Foundation





2025 Financial Information

SUMMARISED STATEMENT OF INCOME AND EXPENDITURE

From 01/01/2025 to 31/12/2025	€	€
	At 31/12/2025	At 31/12/2024
INCOMES (LEGACIES AND GIFTS)	3,746,161	3,901,756
Grants paid for projects and envelopes voted	721,292	773,889
Grants to be paid for projects and envelopes voted	2,527,575	2,195,526
Other costs and external expenses	534,877	527,938
EXPENSES	3,783,744	3,497,353
OPERATING RESULT	-37,583	404,403
Financial Income	80,119	103,478
Financial Expenses	1,266	4,470
FINANCIAL RESULTS	78,853	99,008
RECURRING INCOME	41,270	503,411





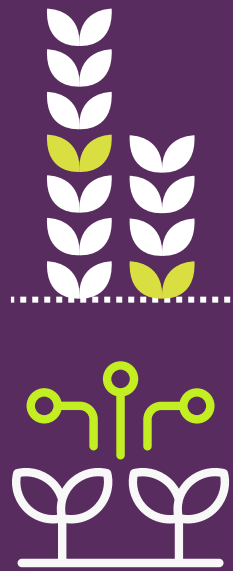
Partners

- Abiove (Brazil)
- Agrisud (Brazil)
- Biovision Africa Trust (Kenya)
- CARD (India)
- Cereal Growers Association (Kenya)
- Centre for microFinance (India)
- Coastal Prevention Salinity Cell (India)
- Earthworm Foundation (Côte d'Ivoire)
- Egerton University (Kenya)
- ETH Zurich Foundation (Kenya)
- Equity Group Foundation
- FairMatch Support (Côte d'Ivoire)
- Fert (Côte d'Ivoire, Kenya)
- Fundación Aquí Es (Argentina)
- Fundación Grano de Mostaza (Argentina)
- Institut Européen de Coopération et de Développement (Côte d'Ivoire)
- Inter Aide (Ethiopia)
- Louis Dreyfus Company
- Om Habibeh Foundation (Egypt)
- Potenciar (Argentina)
- PT Pro Pertanian Lestari (Indonesia)
- Root Capital (Kenya)
- Rural Community Based Development Initiative Association (Ethiopia)
- São Paulo State University (Brazil)
- Shanghai Agri Services (China)
- Siyazisiza Trust (South Africa)
- Smart Development Works (Indonesia)
- Smiling Gecko (Cambodia)
- Solidaridad (Kenya)
- United Nations Food and Agriculture Organization (Myanmar)
- University of Agricultural Sciences Bengaluru (India)
- University of Pretoria (South Africa)
- University of Salta and Santiago Del Estero (Argentina)
- vBio (Brazil)
- Yayasan Agri Sustineri Indonesia (Indonesia)

Photo Credits

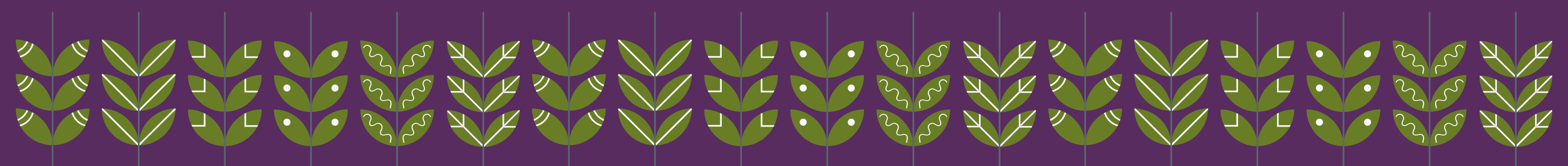
Agrisud, CARD, Centre for microFinance, Coastal Prevention Salinity Cell, Earthworm Foundation, ETH Zurich Foundation, Equity Group Foundation, Fert, Fundación Aquí Es, Fundación Grano de Mostaza, Institut Européen de Coopération et de Développement, Inter Aide, Potenciar, Shanghai Agri Services, Siyazisiza Trust, Solidaridad, United Nations Food and Agriculture Organization, University of Agricultural Sciences Bengaluru, University of Pretoria





Making A Difference

Through Grassroots Action, Together



15 Avenue de la Grande Armée
750 Paris, France

Discover more
www.louisdreyfusfoundation.org

